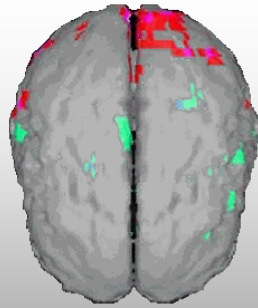
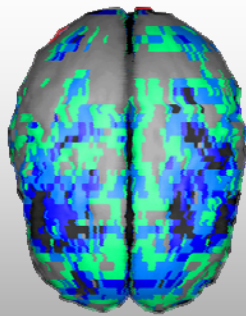


Toxic Brain Injury



Normal



Toxic Brain Injury

CereScan Corp.
300 South Jackson Street
Denver, CO 80209

866-722-4806
CereScanImaging.com

Case Study

Clinical History: The patient was a 40-year-old male. In 2001, he became unconscious at work from the fumes of two automobile engines running simultaneously in an enclosed bay without adequate ventilation.

Chief Complaints:

- Headaches
- Dizziness
- Balance and gait problems
- Memory loss
- Cognitive decline
- Speech problems

Brain SPECT Findings: The patient's brain SPECT scans revealed diffuse decreased patchy cortical activity and patchy decreased basal ganglia activity, consistent with probable toxic/anoxic exposure.

Basal ganglia, frontal and temporal hypoperfusion have been reported in the literature to be consistent with the patient's clinical history of carbon monoxide poisoning.