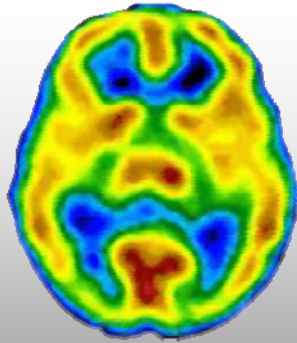
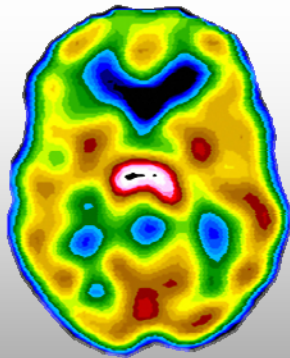


## Depression



Normal



Depression

CereScan Corp.  
300 South Jackson Street  
Denver, CO 80209

866-722-4806  
CereScanImaging.com

## Case Study

**Clinical History:** The patient is a 33-year-old, married female referred by her physician for additional information to assist with the differential diagnosis. She has developed significant mood swings since the birth of her child 11 months ago. Since adolescence, the patient has had a history of depression and an eating disorder, and a past history of substance abuse in adulthood.

### Symptoms:

- Tearfulness
- Low self-esteem
- Difficulty making decisions
- Suicidal ideation (intermittent)
- Irritability
- Restlessness
- Racing thoughts
- Difficulty concentrating

### Brain SPECT Findings:

Moderately/significantly increased symmetrical perfusion of the thalamolimbic area and decreased perfusion in the overall cortical area are consistent with the depressive phase of a mood disorder or depression; increased perfusion of the basal ganglia is consistent with anxiety-related disorders; diffuse decreased patchy cortical activity is consistent with probable toxic/anoxic exposure; and fixed bilateral anterior temporal, left superior anterior frontal and bilateral inferior frontal areas of